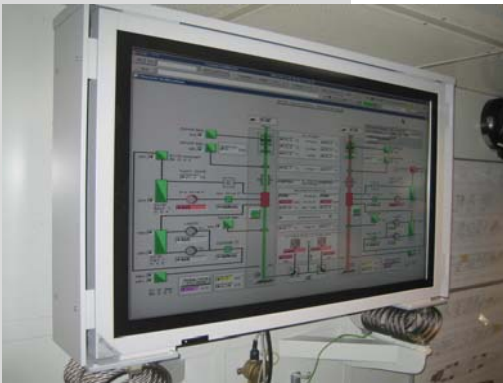


INDUSTRIAL SOLUTIONS



CONRAC 6046 AD FHD

46" LCD/TFT High Definition Automotive Display
In 16:9 format

The large screen full colour LCT/TFT monitor CONRAC 6046 AD has been specially designed for the display of tactical situation reports.

An entirely new generation of large screen monitors: Using a superior HD (High Definition) panel the 6046 AD FHD allows to display even more detailed information on a single screen. Especially for applications involving electronic charts, the combination of the HD resolution and the "wide ECDIS" mode is the ideal solution.

CONRAC GmbH stands for High Performance Displays for specific applications. Own R&D, production and service at the German headquarter guarantee the highest quality standards.

The use of high grade industrial components, modular construction, robust aluminium housing and special laminated safety glass panel with high efficiency anti-glare treatment make the displays the perfect choice for 24h operation in demanding applications.

FEATURES

Robust aluminium cabinet

Suitable for use in mobile applications

Laminated safety glass with high efficiency anti-glare treatment

Superior legibility and safety

Different models with or without integrated graphic engine board

Highly flexible use in various systems: available for connection to standard PC systems or with integrated GEB for networked systems (allowing control and monitoring of key display functions from a central server in the network)

High quality direct digital interface & gamma correction circuitry

Superior picture performance without jitter, phase- or scaling errors. True colour display of graphics and video

Designed for reliable operation in landscape and portrait mode applications

Best possible adaptation to local display needs

Remote control (OSD)

For wireless control of display functions

Modular design

Guarantees high overall system availability and easy maintenance

Conrac electronics and design

In-house R&D ensures long term availability

DISPLAY

Size/diagonal:	46" – 117cm, 16:9 format
Active screen dimensions:	1018.08mm (horizontal) x 572.67mm (vertical)
Resolution:	Max. 1920 x 1080 pixels
Colour performance:	16.7 Mio colour simultaneously (full colour)
Viewing angle:	178° @ CR10 typical
Contrast Ratio:	1200:1 typical
Brightness (max.):	450 cd/m ² typical
Safety/contrast enhancement panel:	anti-glare, 85% light transmission typical
Horizontal frequency:	30 – 80kHz
Vertical frequency:	50 – 85Hz
Pixelclock:	140MHz typical
Display resolutions:	640 x 400, 720 x 400, 640 x 480, 800 x 600, 832 x 624, 1024 x 768, 1280 x 768, 1280 x 1024, 1366 x 768, 1600 x 1200, 1920 x 1080

CONTROLS / CONNECTORS

User controls:	Mains switch																				
Control of display functions:	Via IR remote control, on-screen display RS 232																				
Connectors:	<table border="0"> <tr> <td>Mains:</td> <td>Euro connector with integrated fuse holder</td> </tr> <tr> <td>SCART 1/2:</td> <td>RGB (1), CVBS in/out, audio in/out</td> </tr> <tr> <td>CVBS:</td> <td>RCA-Cinch</td> </tr> <tr> <td>Y/C:</td> <td>HOSIDEN (Mini-DIN)</td> </tr> <tr> <td>PC (analog & digital):</td> <td>DVI-I</td> </tr> <tr> <td>RS 232:</td> <td>9 Pin DSub</td> </tr> <tr> <td>Stereo inputs:</td> <td>3 x Cinch, 1Vrms (CVBS, Y/C, PC)</td> </tr> <tr> <td>Stereo inputs:</td> <td>2 x SCART, 1Vrms</td> </tr> <tr> <td>Stereo line output:</td> <td>1 x Cinch, controllable</td> </tr> <tr> <td>Stereo loudspeaker output:</td> <td>1 x Cinch, 7W sinus @ 4Ohm</td> </tr> </table>	Mains:	Euro connector with integrated fuse holder	SCART 1/2:	RGB (1), CVBS in/out, audio in/out	CVBS:	RCA-Cinch	Y/C:	HOSIDEN (Mini-DIN)	PC (analog & digital):	DVI-I	RS 232:	9 Pin DSub	Stereo inputs:	3 x Cinch, 1Vrms (CVBS, Y/C, PC)	Stereo inputs:	2 x SCART, 1Vrms	Stereo line output:	1 x Cinch, controllable	Stereo loudspeaker output:	1 x Cinch, 7W sinus @ 4Ohm
Mains:	Euro connector with integrated fuse holder																				
SCART 1/2:	RGB (1), CVBS in/out, audio in/out																				
CVBS:	RCA-Cinch																				
Y/C:	HOSIDEN (Mini-DIN)																				
PC (analog & digital):	DVI-I																				
RS 232:	9 Pin DSub																				
Stereo inputs:	3 x Cinch, 1Vrms (CVBS, Y/C, PC)																				
Stereo inputs:	2 x SCART, 1Vrms																				
Stereo line output:	1 x Cinch, controllable																				
Stereo loudspeaker output:	1 x Cinch, 7W sinus @ 4Ohm																				

ENVIRONMENTAL CONDITIONS

Temperature:	0°C - +40°C (operating), -20°C - +60°C (non-operating)
Humidity:	10% - 90% (non-condensing)

POWER

Power supply:	100V – 240V AC, 50 / 60Hz ± 10%
Power consumption:	320W typical

APPROVALS

EMI/EMC:	EN55022 class A, EN55024, EN61000-2-2/-3
Safety:	EN60950, CE

SUPPLIED ACCESSORIES

IR remote control
Wall mount bracket
AC power cord 2.5m
Operating Manual (English)

STANDARD CABINET COLOUR

Standard colour cabinet:	RAL 9006 (white aluminium), non-structured
--------------------------	--

VERSIONS

IP20 protected version

H x W x D: 707mm x 1163mm x 149.5mm
 Weight: 40 kg \pm 10%



OEM versions

Customized versions available on request.

OPTIONS*

*Please note: Not all options may be combined.

DC power supply
 Integrated PC / GEB (Graphic Engine Board)

Technical specification subject to change without prior notice. GM 660.0149, is_6046adFHD_rev00

CONRAC GmbH
 Lindenstrasse 8
 D-97990 Weikersheim
 Germany
 Tel.: +49-7934-101 0
 Fax: +49-7934-101 101
 E-mail: info@conrac.de
 www.conrac.de

CONRAC France
 7 rue Saint Christophe
 F-60300 Baron
 France
 Tel.: +33-3-44 54 96 99
 Fax: +33-3-44 58 55 09
 E-mail: info@conracfrance.fr
 www.conrac.fr

CONRAC Sales Office Italy
 Via R. R. Garibaldi 30
 I-00145 Rome
 Italy
 Tel.: +39-06-45 43 92 02
 Fax: +39-06-45 43 91 79
 E-mail: info@conrac.it
 www.conrac.it

CONRAC Sales Office
 Northern Europe
 Pölsjögatan 66
 S-25440 Helsingborg
 Sweden
 Tel.: +46-42-212 939
 Fax: +46-42-212 948
 E-mail: info@conrac.se
 www.conrac.se

CONRAC MENA FZE
 DAFZA Dubai Airport Free Zone
 3E G06 East Wing 3
 P.O. Box 54592
 Dubai, United Arab Emirates
 Tel.: +9714-29 94 009
 Fax: +9714-29 95 587
 E-mail: info@conrac.ae
 www.conrac.ae

CONRAC Asia
 Display Products Pte Ltd.
 82 Genting Lane #05-04
 Singapore 349567
 Tel.: +65-67 42 79 88
 Fax: +65-67 47 39 33
 E-mail: sales@conrac-asia.com
 www.conrac-asia.com