

INDUSTRIAL SOLUTIONS



CONRAC 6057 AD FHD

57" LCD/TFT High Definition Automotive Display
In 16:9 format

The large screen full colour LCD/TFT monitor CONRAC 6057 AD has been specially designed for the display of tactical situation reports.

An entirely new generation of large screen monitors: Using a superior full HD (High Definition) panel the 6057 AD FHD allows to display even more detailed information on a single screen. Especially for applications involving electronic charts, the combination of the high resolution and the "wide ECDIS" mode is the ideal solution.

CONRAC GmbH stands for High Performance Displays for specific applications. Own R&D, production and service at the German headquarters guarantee the highest quality standards.

The use of high grade industrial components, modular construction, robust aluminium housing and special laminated safety glass panel with high efficiency anti-glare treatment make the displays the perfect choice for 24h operation in demanding applications.

FEATURES

Robust aluminium cabinet

Suitable for use in mobile applications

Laminated safety glass with high efficiency anti-glare treatment

Superior legibility and safety

Different models with or without integrated graphic engine board

Highly flexible use in various systems: available for connection to standard PC systems or with integrated GEB for networked systems (allowing control and monitoring of key display functions from a central server in the network)

High quality direct digital interface & gamma correction circuitry

Superior picture performance without jitter, phase- or scaling errors. True colour display of graphics and video

Designed for reliable operation in landscape and portrait mode applications

Best possible adaptation to local display needs

Remote control (OSD)

For wireless control of display functions

Modular design

Guarantees high overall system availability and easy maintenance

Conrac electronics and design

In-house R&D ensures long term availability

DISPLAY

Size/diagonal:	57" – 144cm, 16:9 format
Active screen dimensions:	1251.36mm (horizontal) x 703.89mm (vertical)
Resolution:	Max. 1920 x 1080 pixels
Colour performance:	16.7 Mio colour simultaneously (full colour)
Viewing angle:	178° @ CR10 typical
Contrast Ratio:	1200:1 typical
Brightness (max.):	600 cd/m ² typical without front glass
Safety/contrast enhancement panel:	anti-glare, 85% +10 % light transmission typical
Horizontal frequency:	30 – 80kHz
Vertical frequency:	50 – 90Hz
Clock frequency analogue RGB:	max. 150 MHz typical
Clock frequency HDMI:	162 MHz
Resolutions :	640 x 400, 720 x 400, 640 x 480, 800 x 600, 832 x 624, 1024 x 768, 1280 x 768, 1280 x 1024, 1366 x 768, 1600 x 1200, 1920 x 1080

CONTROLS / CONNECTORS

User controls:	Mains switch														
Control of display functions:	Via IR remote control, on-screen display, RS 232														
Connectors:	<table border="0"> <tr> <td>Y/Pr/Pb (YUV):</td> <td>HDTV (480p, 576p, 720p, 1080i)</td> </tr> <tr> <td>SCART 1/ SCART 2:</td> <td>CVBS, RGB / CVBS, Y/C</td> </tr> <tr> <td>CVBS</td> <td></td> </tr> <tr> <td>Y/C</td> <td></td> </tr> <tr> <td>Analog RGB PC input:</td> <td>Up to UXGA, 1600x1200 px, 60Hz</td> </tr> <tr> <td>2x HDMI:</td> <td>HDCP; HDTV 480p, 576p, 720p, 1080i, Optional 1080p Rev. 1.0</td> </tr> <tr> <td>1x RS232</td> <td>Full remote control & service</td> </tr> </table>	Y/Pr/Pb (YUV):	HDTV (480p, 576p, 720p, 1080i)	SCART 1/ SCART 2:	CVBS, RGB / CVBS, Y/C	CVBS		Y/C		Analog RGB PC input:	Up to UXGA, 1600x1200 px, 60Hz	2x HDMI:	HDCP; HDTV 480p, 576p, 720p, 1080i, Optional 1080p Rev. 1.0	1x RS232	Full remote control & service
Y/Pr/Pb (YUV):	HDTV (480p, 576p, 720p, 1080i)														
SCART 1/ SCART 2:	CVBS, RGB / CVBS, Y/C														
CVBS															
Y/C															
Analog RGB PC input:	Up to UXGA, 1600x1200 px, 60Hz														
2x HDMI:	HDCP; HDTV 480p, 576p, 720p, 1080i, Optional 1080p Rev. 1.0														
1x RS232	Full remote control & service														

ENVIRONMENTAL CONDITIONS

Temperature:	0°C - +40°C (operating), -20°C - +60°C (non-operating)
Humidity:	10% - 90% (non-condensing)

POWER

Power supply:	100V – 240V AC, 50 / 60Hz ± 10%
Power consumption:	545 W typical, <= 0.6 W in standby mode

APPROVALS

EMI/EMC:	EN55022 class A, EN55024, EN61000-2-2/-3
Safety:	EN60950, CE

SUPPLIED ACCESSORIES

IR remote control
AC power cord 2.5m
Operating Manual (English)

STANDARD CABINET COLOUR

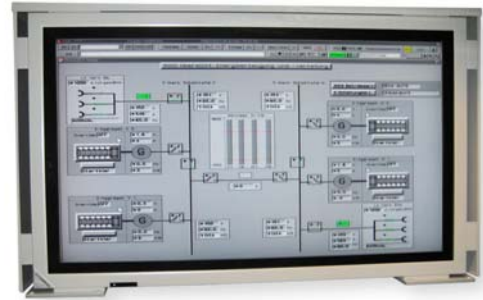
Standard colour cabinet:	RAL 9006 (white aluminium), non-structured
--------------------------	--------------------------------------------

VERSIONS

IP20 protected version

H x W x D: 845mm x 1402mm x 170mm
Weight: t.b.d.

Photograph shows display with special shock mounting system!



OEM versions

Customized versions available on request.

OPTIONS*

*Please note: Not all options may be combined.

DC power supply
Integrated PC / GEB (Graphic Engine Board)
TV tuner
Special shock mounting system
Wall mount bracket

Technical specification subject to change without prior notice. GM 660.0084, is_6057adFHD_rev06

Headquarters:

CONRAC GmbH - Lindenstrasse 8 - D-97990 Weikersheim - Germany - Tel.: +49-7934-101 0 - Fax: +49-7934-101 101 - E-mail: info@conrac.de - www.conrac.de

Subsidiaries & Sales Offices:

CONRAC France - 7 rue Saint Christophe - 60300 Baron - France - Tel.: +33-3-44 54 96 99 - Fax: +33-3-44 58 55 09 - E-mail: info@conracfrance.fr - www.conrac.fr

CONRAC Asia Display Products Pte Ltd. - 82 Genting Lane #05-04 - Singapore 349567 - Tel.: +65-67 42 79 88 - Fax: +65-67 47 39 33 - E-mail: sales@conrac-asia.com - www.conrac-asia.com

CONRAC MENA - Unit WB 03 - Block I / Warehouse 11 - Airport FZE - P.O. Box 54592 - Dubai, U.A.E. - Tel.: +9714-29 94 009 - Fax: +9714-29 95 587 - E-mail: info@conrac.ae - www.conrac.ae

CONRAC South Africa (Pty) Ltd. - Block C, Lifestyle Riverfront Office Estate - Bosbok Road, Randpark Ridge - Randburg - South Africa - Tel. / Fax: +27 12 667 6055 - E-mail: info@conrac.co.za

CONRAC Sales Office Southern Europe - Via R. R. Garibaldi 30 - I-00145 Rome - Italy - Tel.: +39-06-45 43 92 02 - Fax: +39-06-45 43 91 79 - E-mail: info@conrac.it - www.conrac.it

CONRAC Sales Office Northern Europe - Pålsgöatan 66 - S-25440 Helsingborg - Sweden - Tel.: +46-42-212 939 - Fax: +46-42-212 948 - E-mail: info@conrac.se - www.conrac.se

CONRAC LTDA Latin America - Carrera 14 # 96 - 82 - Bogotá - Colombia - Tel. / Fax: +57-1-34 65 338 - E-mail: info@conrac.com.co - www.conrac.com.co