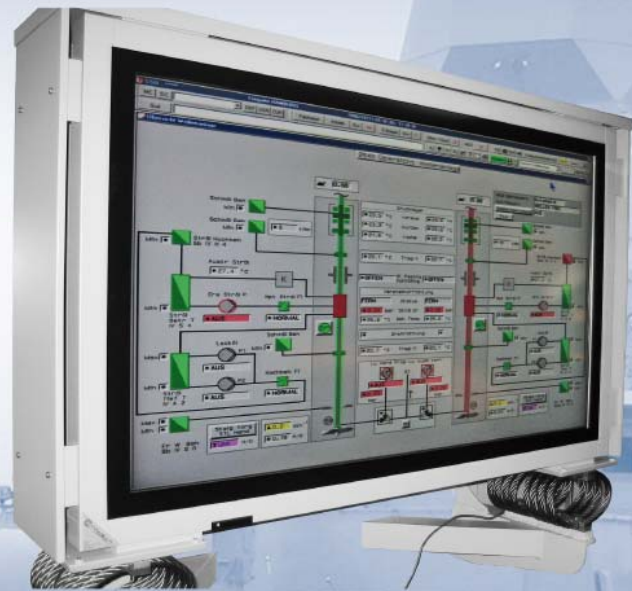


AUTOMOTIVE DISPLAYS



- Designed for 24/7 operation
- Laminated safety glass with high efficiency anti-glare treatment
- Robust fire-retardant aluminium housings with powder coating - IP 20 (front protection IP 53)
- Robust seawater resistant aluminium housing treated to protect from corrosion
- Wide dimming range backlight inverter
- Extended temperature range - climate control and display heating
- Enhanced vibration and shock resistance
- cTEC features guarantee trouble-free operation, prolong lifetime and reduce the cost of ownership
- Long-term service & support

Innovation. Experience. Flexibility. Quality.

Diagonal Model		65" 6065 AD
Display		
Panel type:	LCD/TFT	
Size / diagonal:	65" – 165cm	
Active screen dimensions (h x v):	1428mm x 804mm	
Resolution:	1920 x 1080 (pixel)	
Format:	16:9	
Colour performance:	16.7 Mio colour simultaneously (full colour)	
Viewing angle:	176° (typical)	
Contrast ratio:	2000:1 (typical) / 6000:1 (dynamic)	
Brightness:	450 cd/m ² (typical) without front glass	
Safety / contrast enhancement panel:	anti-glare, 85% light transmission typical	
Frequency (Horizontal / Vertical):	30 – 80 kHz / 50 – 90 kHz	
Pixelclock:	analog RGB: max. 150MHz (typical) HDMI: 162 MHz	
Display resolutions:	640 x 400, 720 x 400, 640 x 480, 800 x 600, 832 x 624, 1024 x 768, 1280 x 768, 1280 x 1024, 1366 x 768, 1600 x 1200, 1920 x 1080	
Controls / Connectors		
User controls:	Mains switch	
Control of display function:	Via IR remote control, on-screen display RS 232	
Connectors:	Mains:	Euro connector with integrated fuse holder
	SCART 1 /2:	RGB, CVBS in/out, Y/C
	CVBS:	1x Cinch (Y)
	Y/C:	Mini-DIN (HOSIDEN)
	PC (analog & digital):	VGA, HDMI/DVI-D adapter
	RS 232:	9pin HD-Sub
	Stereo inputs:	2x 2 Cinch L/R 1Vrms (YUV (CVBS), YC) 2x Cinch L/R 1Vrms (PC VGA) 2x SCART 1Vrms
	Stereo outputs:	2x Cinch (Line out L/R)
	Stereo loudspeaker output:	2x Cinch (7W RMS (8 Ohm)
Environmental conditions		
Temperature (operating):	0° C - + 40° C	
Temperature (non-operating):	-20° C - +60° C	
Humidity:	10% - 90% (non-condensing)	
IP Protection:	IP20 / front IP53	
Power		
Power supply:	100V – 240V AC, 50 Hz – 60Hz +/-10%	
Power consumption:	300W typ.	
Dimensions & Weight		
H x W x D / kg:	979 x 1627.3 x 175 mm / 79.5 kg +/-10%	
Approvals		
EMI/EMC :	EN55022 class A, EN55024, EN61000-2-2/-3	
Safety:	EN60950, CE	
Options*		
DC power supply:	•	
Integrated PC/GEB:	•	
TV tuner:	•	
Special Shock mounting system:	•	
Wall mount Bracket:	On request	
Supplied Accessories		
Operating Manual (E):	•	
IR remote control:	•	
AC power cord 2.5m:	•	
Colour		
Standard colour cabinet:	RAL 9006 (white aluminium), non-structured	

Description & Special Features

High definition Automotive Displays - LCD/TFT Displays / 16:9 Format

CONRAC's range of highly engineered Automotive LCD/TFT Displays is especially designed for tactical situation reports and to withstand the harsh maritime environment. With a superior high definition panel, the CONRAC 60xx AD FHD series allows to display even more detailed information on a single screen. Especially for applications involving electronic charts, the combination of the high resolution and the "wideECDIS" mode is the ideal solution.

The use of high grade industrial components, modular construction, robust aluminium housing and special laminated safety glass panel with high efficiency anti-glare treatment make the display the best choice for 24h operation in demanding applications.

Customised displays are available on request.

Features

Robust aluminium cabinet / Shock and vibration resistance

Suitable for use in mobile applications. The robust aluminium cabinet as well as enhanced shock and vibration resilience ensure stable operation and long lifetime under critical ambient conditions.

Contrast enhancing safety glass

The use of laminated safety glass with high efficiency anti-glare treatment does not only maximise security and protect the display but also enhances image contrast.

Different models with or without integrated PC

Highly flexible use in various systems: available for connection to standard PC systems or with integrated PC for networked systems (allowing control and monitoring of key display functions form a central server in the network.

High quality direct interface & gamma correction circuitry

Superior picture performance without jitter, phase- or scaling errors. True colour display of graphics and video.

Designed for reliable operation in landscape and portrait mode applications

Best possible adaptation to local display needs.

Modular design

Guarantees high overall system availability and easy maintenance.

CONRAC electronics and design

In-house R&D ensures long term availability.

eTEC - CONRAC Technology

eALC

Ambient Light Control

Automatic adjustment of the brightness depending on surrounding light conditions, maximises the image quality, prolongs display lifetime while minimising power consumption.

eTCS

Temperature Control System

Active temperature control monitors the heat level and controls the fans.

eDPR

Dynamic Pixel Refreshing

A special system driving the TFT cells avoids image sticking and increases display lifetime considerably.

ePXS

Pixel Shifting

Continuous shifting of the entire image in different directions prevents image sticking. At normal viewing distance, this is almost not visible. If required by the application, the shifting area can be adjusted manually.

eSPM

Soft Picture Mode

An intelligent scaling mechanism smooths out extreme contrast transitions. This process avoids the so called boundary line image sticking, which occurs at „sharp“ transitions (e.g. black to white). If required, the degree of „softening“ can be adjusted manually.

eCOOL

Innovative Cooling System

The intelligent cooling system works in two cycles, an open loop and a closed loop. Despite the Public Displays' laminated safety glass panel, it cools the TFT panel from front and back. Depending on the display size and its power consumption, one, two or more air ventilation ducts can be integrated. Furthermore, a special sealing method avoids dust accumulation inside the display. The cooling system is very energy efficient and maintenance-free, reducing the cost of ownership.

Monitor versions only:

eDNC

Dynamic Noise Control

Intelligent algorithms suppress the „noise“ typical for analog signals, while optimising image performance.

eDCC

Dynamic Contrast Control

A very complex technique allows incessant correction of both the backlight brightness and contrast of the TFT cells, resulting in a natural, very high-contrast image. Additionally, this results in a reduced power consumption.

eBWE

Black and White Expansion

Optimises the display of very small details. Particularly in dark areas, even the smallest details - not visible on conventional displays - can be displayed generating an extremely brilliant and high-contrast image.

eTMM

True Movie Mode

True Movie Mode uses special algorithms allowing film reproduction (DVDs) in amazing quality. This applies not only to commercial standard definition DVD material, but also to DVD films in HD 1080i (e.g. Blu-Ray).

Developed / Designed / Made in Germany

Headquarters:

CONRAC GmbH
Lindenstrasse 8
D-97990 Weikersheim
Germany
Tel.: +49-7934-101-0
Fax: +49-7934-101-101
E-mail: info@conrac.de
www.conrac.de

Subsidiaries & Sales Offices:

CONRAC FRANCE
7 rue Saint Christophe
60300 Baron
France
Tel.: +33-3-44 54 96 99
Fax: +33-3-44 58 55 09
E-mail: info@conracfrance.fr
www.conrac.fr

CONRAC Asia
Display Products Pte Ltd
82 Genting Lane #05-04
Singapore 349567
Tel.: +65-67 42 79 88
Fax: +65-6747 39 33
E-mail: sales@conrac-asia.com
www.conrac-asia.com

CONRAC MENA FZE
Unit WB 03 - Block 1 /
Warehouse 11 - Airport FZE
PO Box 54592
Dubai - United Arab Emirates
Tel.: +9714-29 94 009
Fax: +9714-29 95 587
E-mail: info@conrac.ae
www.conrac.ae

CONRAC South Africa (Pty) Ltd
Hutton Court
CNR Summit Rd & Jan Smuts Ave
Hyde Park
Johannesburg 2169
South Africa
Tel.: +27-83-635 0369
Fax: +27-86-693 4976
E-mail: info@conrac.co.za
www.conrac.co.za

CONRAC LTDA
Latin America
Carrera 14
96 - 82
Bogotá
Colombia
Tel. / Fax: +57-1-34 65 338
E-mail: info@conrac.com.co
www.conrac.com.co

CONRAC Sales Office
Southern Europe
Via R. R. Garibaldi 30
I-00145 Rome
Italy
Tel.: +39-06-45 43 92 02
Fax: +39-06-45 43 91 79
E-mail: info@conrac.it
www.conrac.it

CONRAC Sales Office
Northern Europe
Pålsjögatan 66
S-25440 Helsingborg
Sweden
Tel.: +46-42-212 939
Fax: +46-42-212 948
E-mail: info@conrac.se
www.conrac.se

Technical specification subject to change
without prior notice.
GM ad_960.0021_rev00

