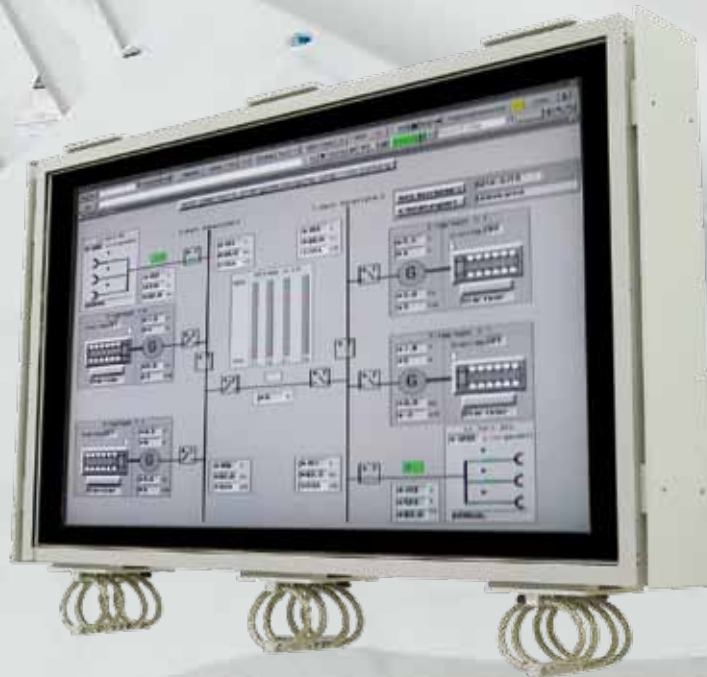


# LARGE SCREEN MARITIME / AUTOMOTIVE DISPLAYS



**Innovation. Experience. Flexibility. Quality.**

# Large Screen Maritime / Automotive Displays

## MARITIME / AUTOMOTIVE DISPLAYS

CONRAC's large screen displays tested according to various MIL Standards are a good example of customised display solutions for highly demanding applications, clearly showing CONRAC's expertise in the development of displays for use in extremely harsh environments



Of course, similar designs, e.g. with different surface finishes, different display sizes and different configurations and options can be realised.

For the basic products please refer to our technical datasheets and product flyers.

SPECIAL SOLUTIONS



Active in the research and development of special display solutions for decades, CONRAC has established a reputation as leading provider of large screen solutions for extremely harsh maritime environments.

Always on the technological forefront CONRAC develops and manufactures custom-tailored display solutions. A multitude of mechanical and electronic configurations is available, e.g. monitor-only versions, integrated PCs, integrated touch screens, etc.

Examples of installations

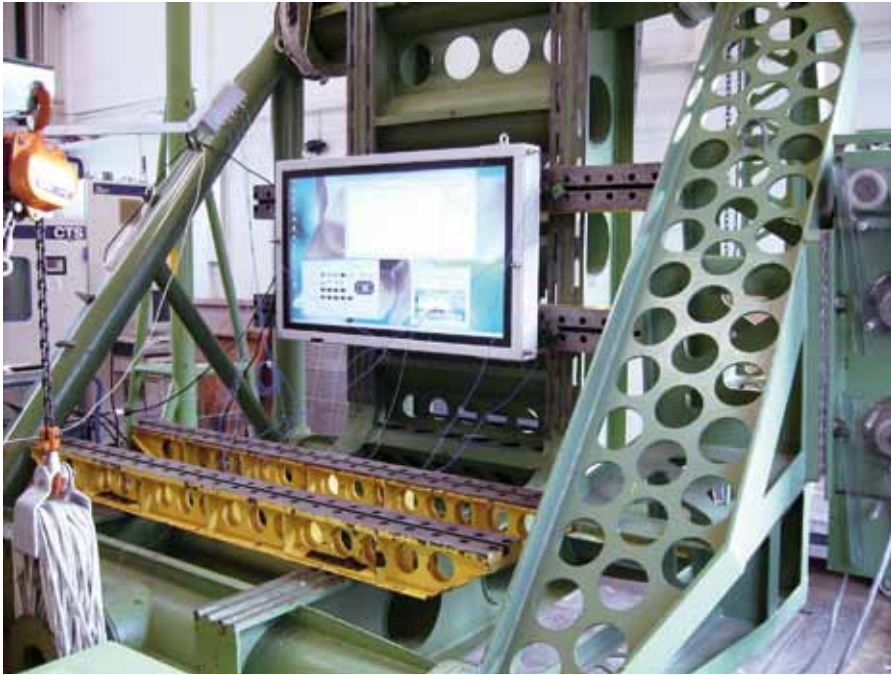


## Shock and Vibration Testing

# SHOCK AND VIBRATION TESTING

Special marine wall mounting solutions enable CONRAC's large screen automotive products to withstand excessive shock and vibration and ensure stable operation.

Depending on the display size, various different mounting options are used.



**The displays have been tested according to MIL-STD-167 and MIL-STD-810. Additionally they fulfil the requirements to withstand severe underwater explosions up to 100g.**

**Everyone present during the testing, our customers and even representatives from the Ministry of Defence were very impressed indeed that the displays withstood the enormous impact in full operation.**





**eVTEC**  
CONRAC Technology

Makes your displays last longer.

**eVALC**  
Ambient Light Control

**eVBWE**  
Black and White Expansion

**eVCOOL**  
Innovative Cooling System

**eVDCC**  
Dynamic Contrast Control

**eVDNC**  
Dynamic Noise Control

**eVDPM**  
Display Performance Monitoring

**eVDPR**  
Dynamic Pixel Refreshing

**eVECO**  
Eco-friendly products

**eVLTE**  
Life Time Expansion

**eVPXS**  
Pixel Shifting

**eVSPM**  
Soft Picture Mode

**eVTCS**  
Temperature Control System

**eVTMM**  
True Movie Mode

**Developed / Designed / Made in Germany**

Head office & production:

**CONRAC GmbH**  
Lindenstrasse 8 - D-97990 Weikersheim  
Germany  
Tel.: +49-7934-101 0  
Fax: +49-7934-101 101  
E-mail: info@conrac.de  
Internet: www.conrac.de

Specification subject to change without  
prior notice.  
GM flyer\_apps\_mar\_0-0072\_e\_rev00

Subsidiaries & Sales Offices:

**CONRAC France - Paris**  
E-mail: info@conracfrance.fr  
www.conrac.fr  
Tel.: +33 (0)3-44 54 96 99

**CONRAC Asia - Singapore**  
E-mail: sales@conrac-asia.com  
www.conrac-asia.com  
Tel.: +65-67 42 79 88

**CONRAC MENA FZE - Dubai**  
E-mail: info@conrac.ae  
www.conrac.ae  
Tel.: +971-4 29 94 009

**CONRAC South Africa - Johannesburg**  
E-Mail: info@conrac.co.za  
www.conrac.co.za  
Tel.: +27-83-635 0369

**CONRAC Latin America - Bogota**  
E-Mail: info@conrac.com.co  
www.conrac.com.co  
Tel./Fax: +57-1-34 65 338

**CONRAC Sales Office  
Southern Europe - Rome**  
E-mail: info@conrac.it  
www.conrac.it  
Tel.: +39 06-45 43 92 02

**CONRAC Sales Office  
Northern Europe - Helsingborg**  
E-mail: info@conrac.se  
www.conrac.se  
Tel.: +46 42 212 939

